

COOL

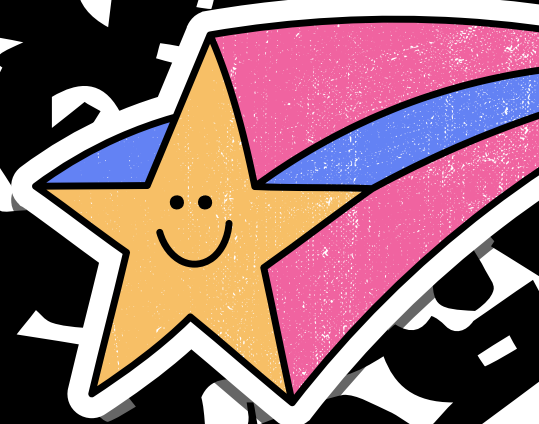


WELCOME

to 5th Grade Parent

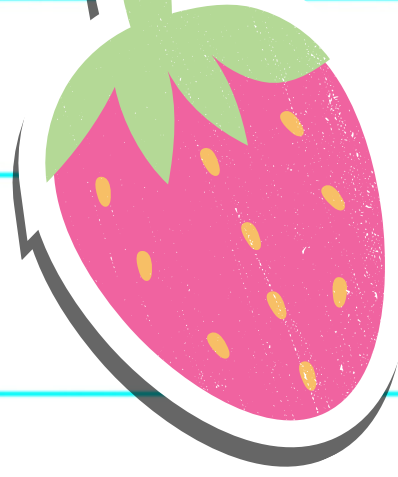
Night!

McKeel Academy Central

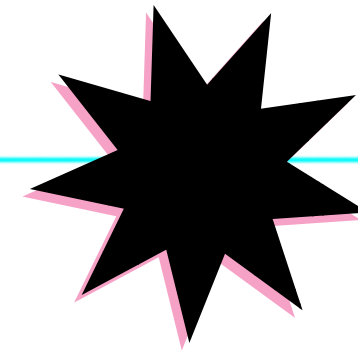


**Please Join
Remind to
receive
important
messages!**

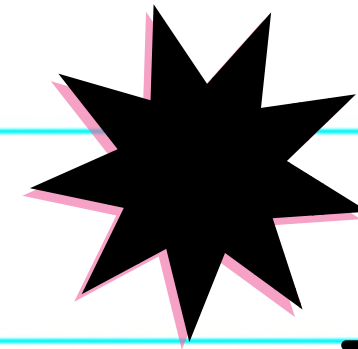




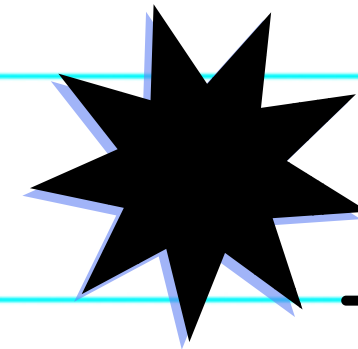
Meet the Teachers



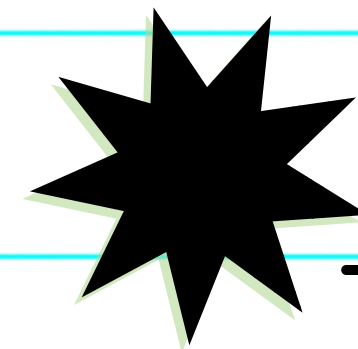
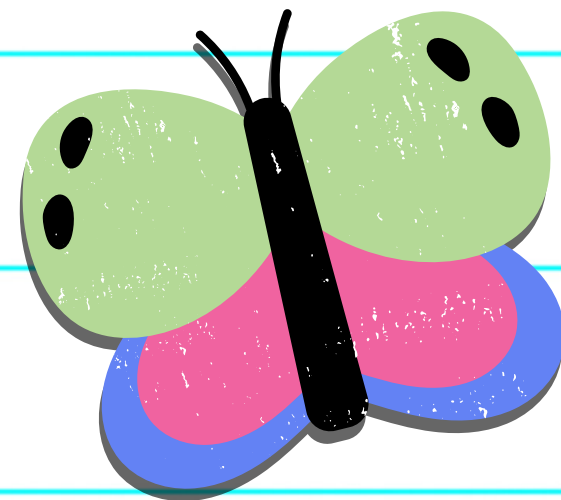
Mrs. Harris



Ms. Hay

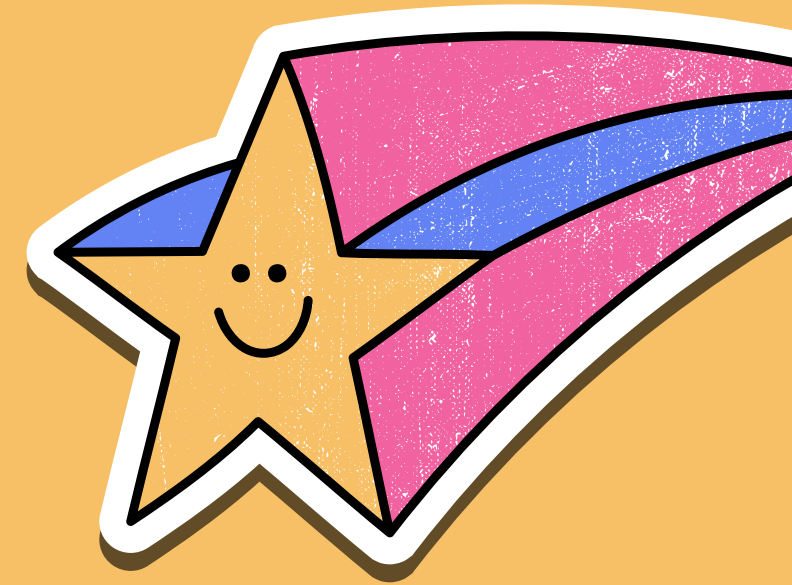


Mrs. Lay



Mrs. Neuman

Communication



Agendas

Student Use

No Signature Required

Remind

**Important Info
& Reminders Sent**

Email

**Contact Subject
Area Teacher**

Website

mckeelcentral.com

Grading Scale



EXCELLENT

GOAL



PROFICIENT



DEVELOPING



LIMITED EVIDENCE



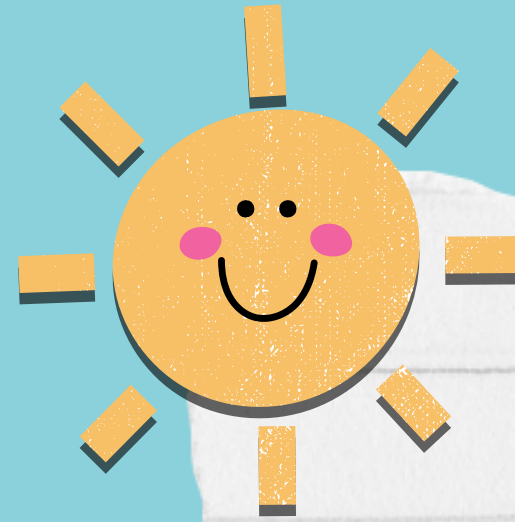
OF CONCERN



STUDENTS MAY TAKE A REASSESSMENT ON SUMMATIVES (D'S & F'S ONLY)

Requirements for Reassessments

*Forms are located in our
classrooms and on our websites

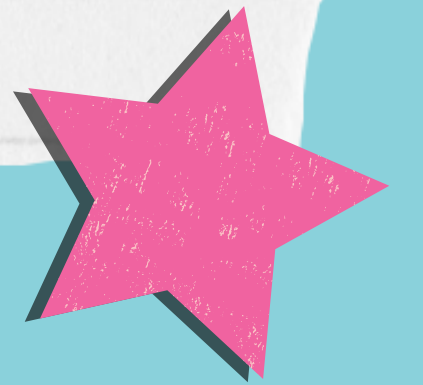


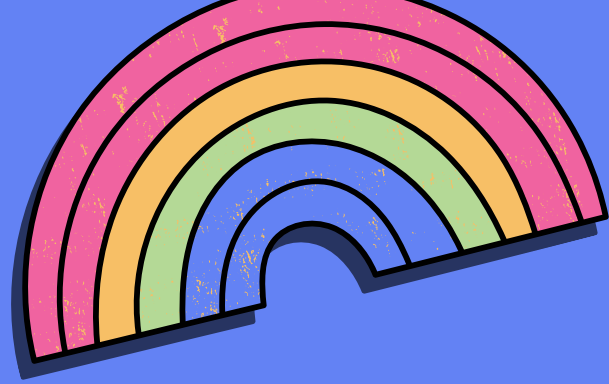
SUPER

Fill out Reassessment Form


**Complete all assigned work
by the due date**

Schedule a time to reassess





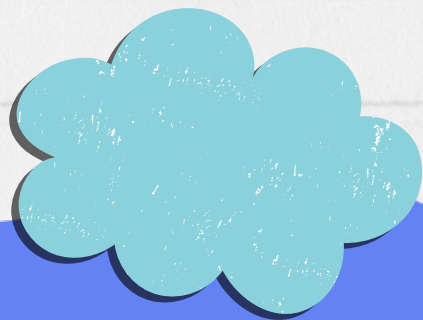
Homework



**Read
30 minutes
Daily**



Math Practice



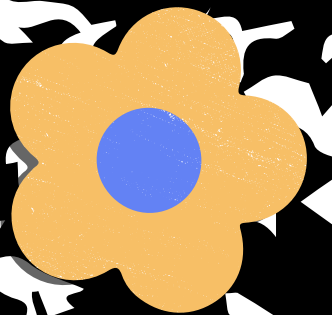
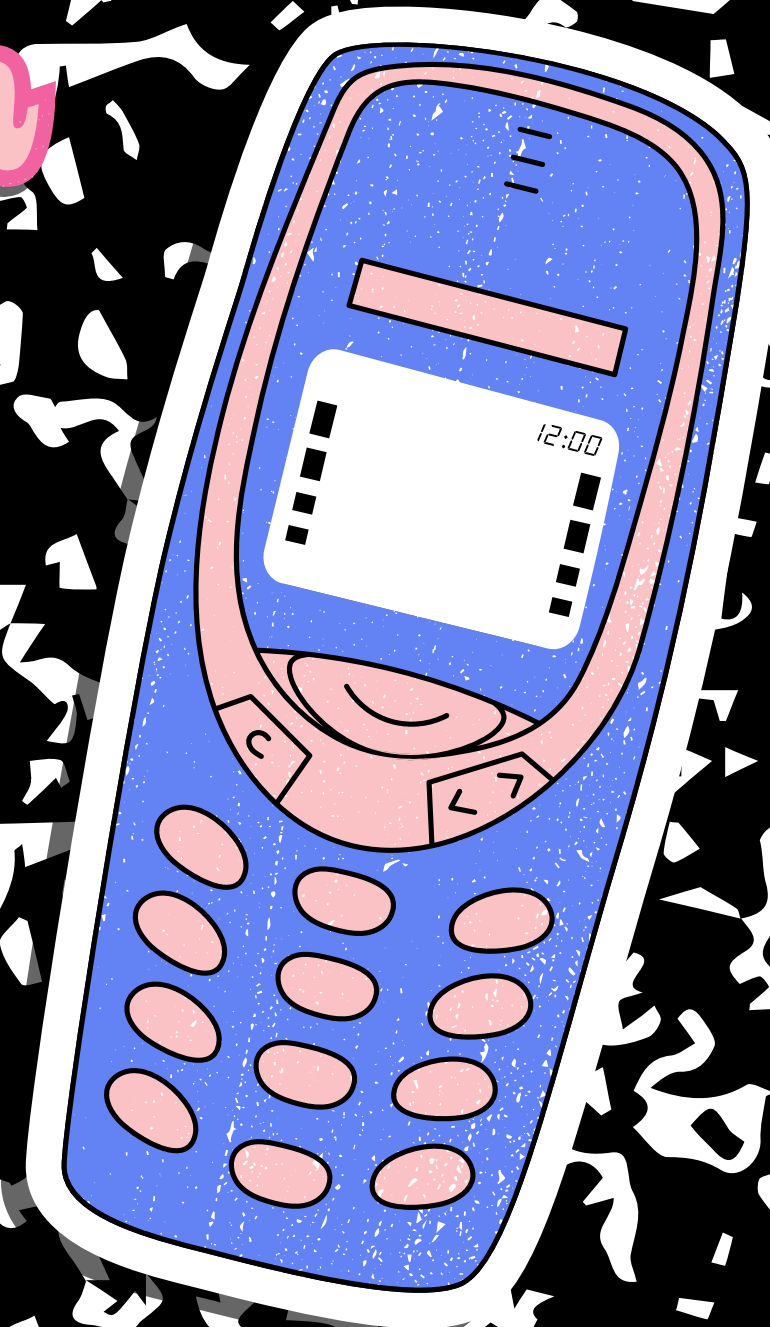
**Notifications emailed through systems
when homework is incomplete**

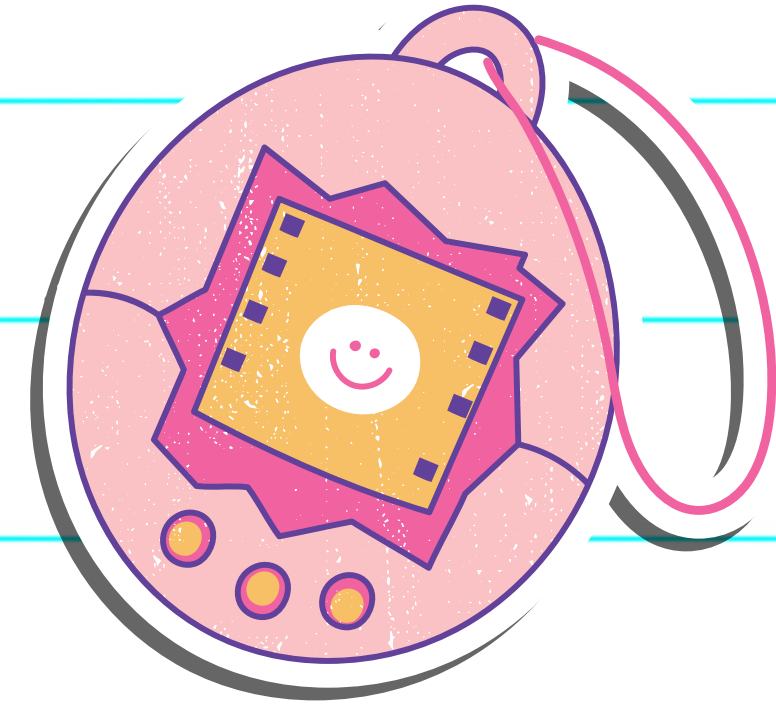
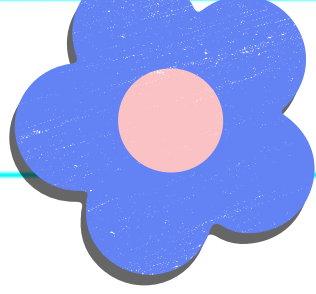


Personal Electronics

**FL Law HB 379 states
that ALL electronics
must be powered off
during the school day.**

Dream





Field Trips

1/25

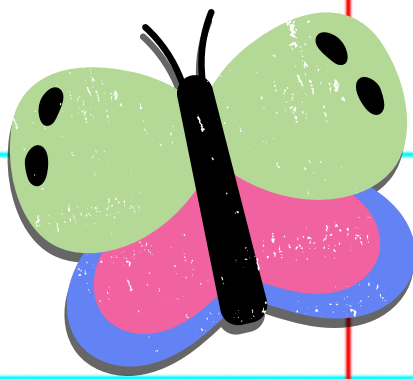
Alafia River
Rendezvous

2/15

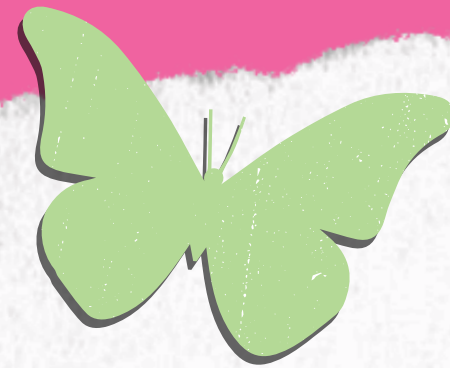
Kennedy Space
Center

4/19

Biztown

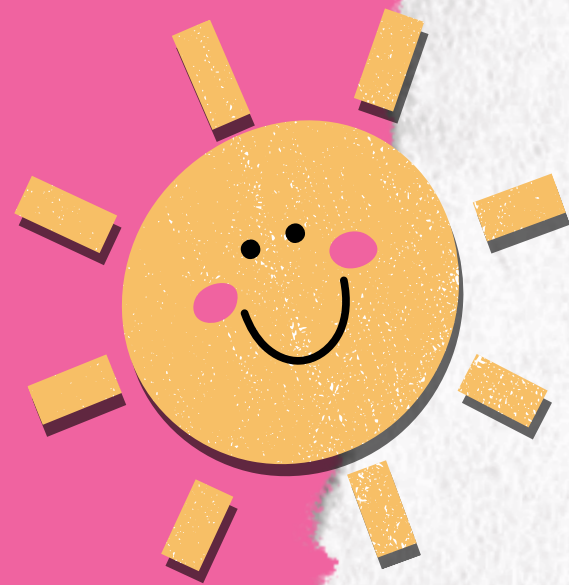


Fifth Grade Dues



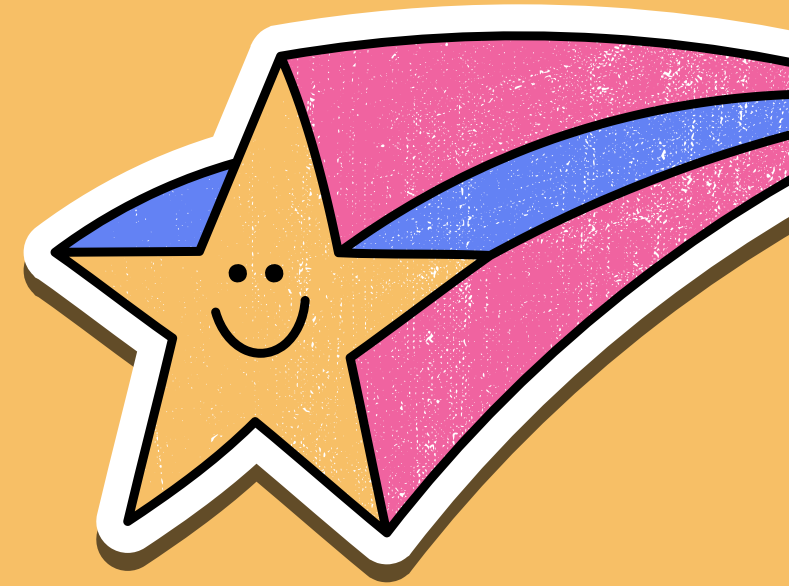
Pay on MOO

\$30 Per Student



Payable August 28th-September 29th

Fundraisers



Krispy Kreme

TBA

Otis

October 6th-20th

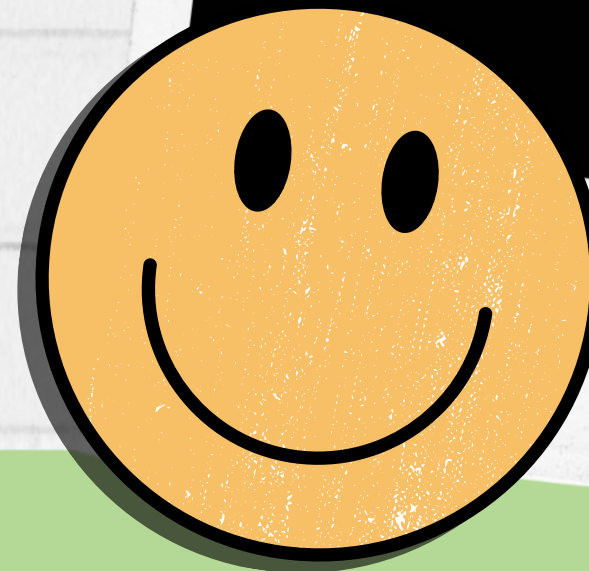
**Are you an
approved volunteer?**

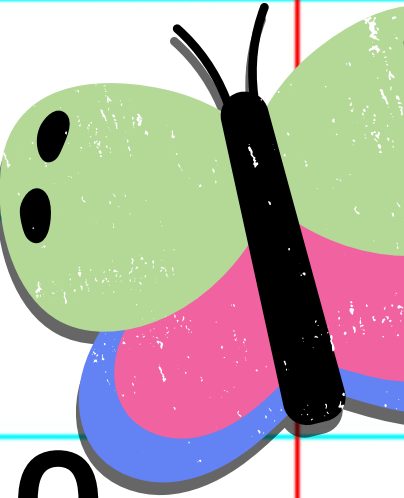
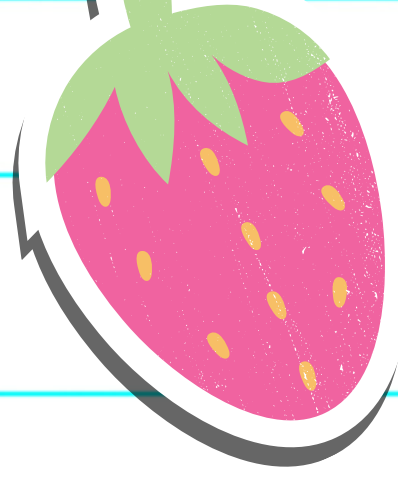
***Anyone planning to
chaperone a field
trip MUST be approved
by McKeel Schools.**

**Deadline to
Apply**

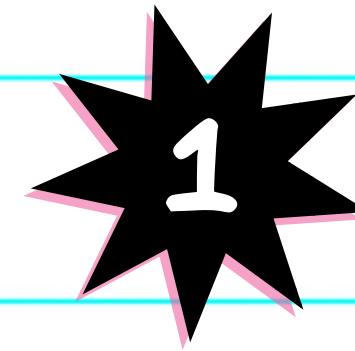
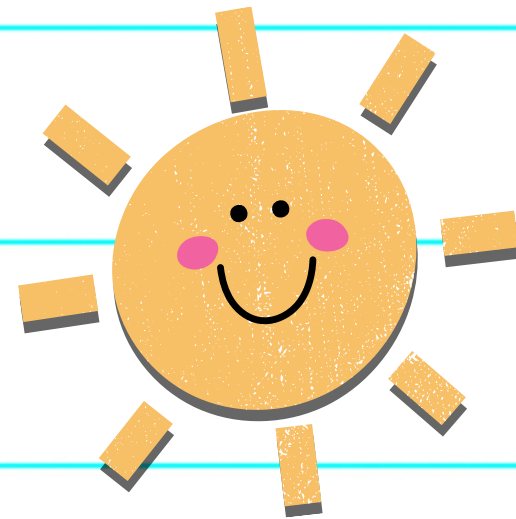
TBA

***Watch for email**





Changes in Car Line



Drop off by 8:10

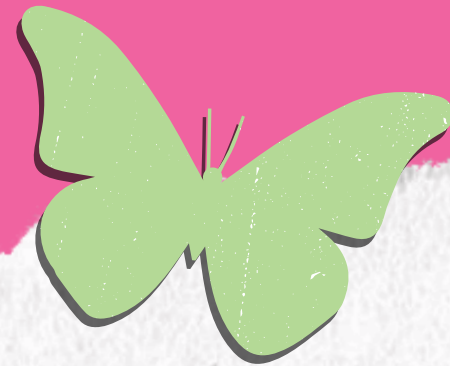


Pick up by 3:25

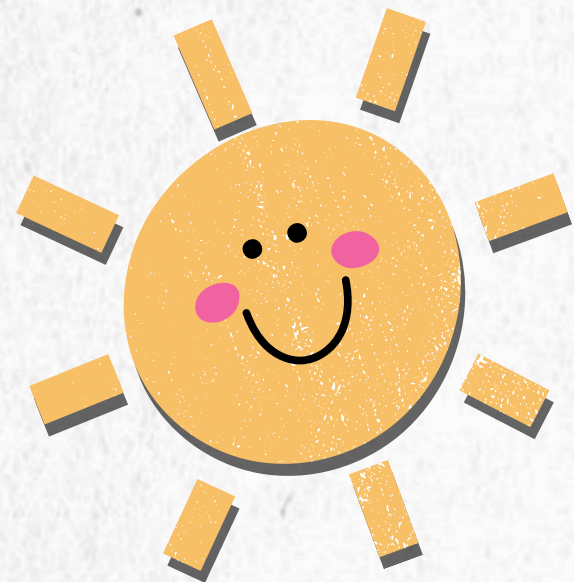


**Walk ups must
have car tags**

Water Bottles & Snack



**Students may only have
plain, clear water for class**

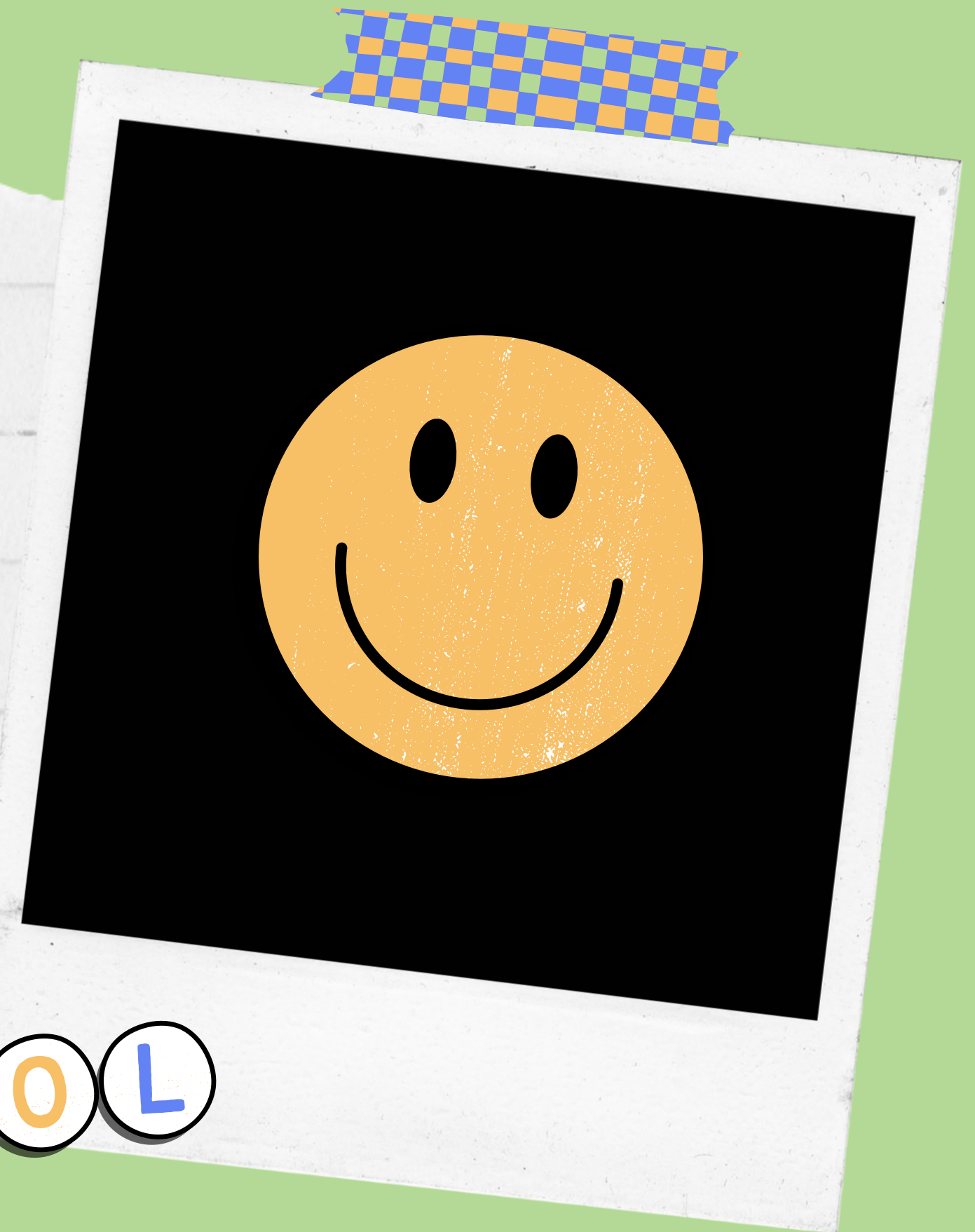


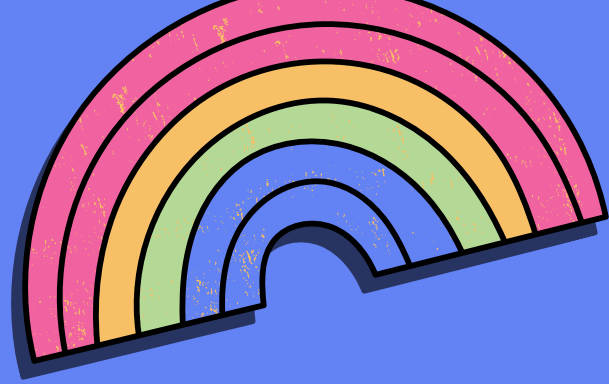
**Students may bring a healthy
snack for morning and/or
afternoon or purchase one from
Mrs. Harris**

Friday Jeans

All jean shorts, skirts, and skorts must be mid-thigh length with no holes or frays

COOL





Academic Team



General Information

Student Practices

9/7

9/14

3:15-4:15



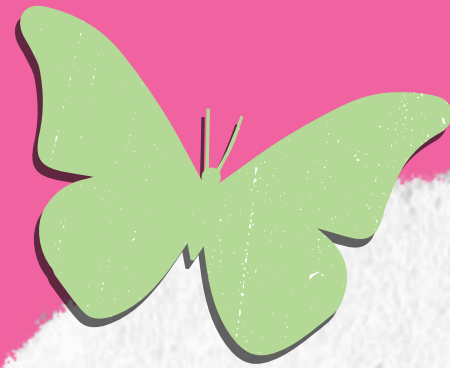
Tryouts

9/21

3:15-4:15

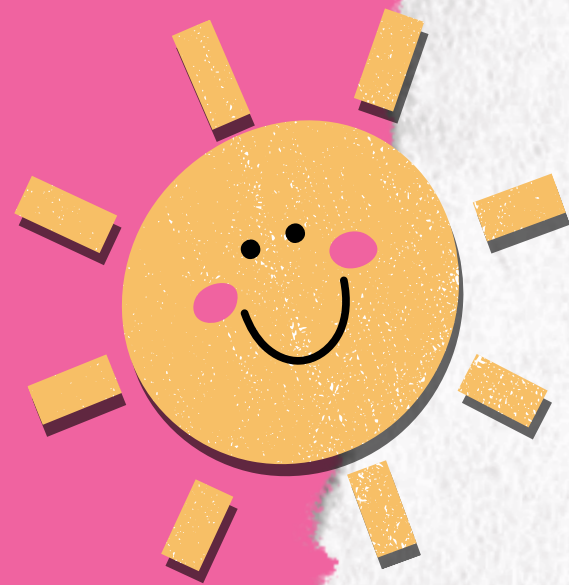
S U P E R

Too Good For Drugs



Every Wednesday for 10 Weeks

Begins September 6th



**Weekly Homework to inspire
important family discussions**

Canvas Home Pages

Look here for daily assignments & make up work!



Tuesday	
	Homeroom - 8:00 - 8:25 - Lunch count, AR Reading, Language ixl - Times of Sentences
	MAC Time 8:25 - 8:55 - MAC Time
	1st Period - 8:55 - 10:00 - Informational Text - Main Idea & Details and Text Features - Story: The Path to Paper Son & Louie Share Kim, Paper Son , Suffixes p. 36
	2nd Period - 10:00- 10:50 - Informational Text - Main Idea & Details and Text Features - Story: The Path to Paper Son & Louie Share Kim, Paper Son , Suffixes p. 36
	Homeroom - 10:50 - 11:10 - Bullying Lessons
Class Today	Hay's Lunch w/ 3rd period - 11:44 - 12:09
	3rd Period - 11:10 - 12:30 - Informational Text - Main Idea & Details and Text Features - Story: The Path to Paper Son & Louie Share Kim, Paper Son , Suffixes p. 36
	4th Period - 12:30 - 1:20 - Informational Text - Main Idea & Details and Text Features - Story: The Path to Paper Son & Louie Share Kim, Paper Son , Suffixes p. 36
	PE/Art -1:25 - 2:05 - Hay's HR - M, T, W, F
	Math Groups/Music - Hay's HR 2:10 - 2:50
	Spanish - 2:10 - 2:50 - Hay's HR - Fridays

Canvas Home Pages

Look here for daily assignments & make up work!



Math Grade 5



Email me: somerlay@mckeelschools.com

All work below is completed during math class, math groups, and homework if not done.



This week we will begin learning about Expressions. We will review number properties, learn how to evaluate expressions using order of operations, and how to write expressions.

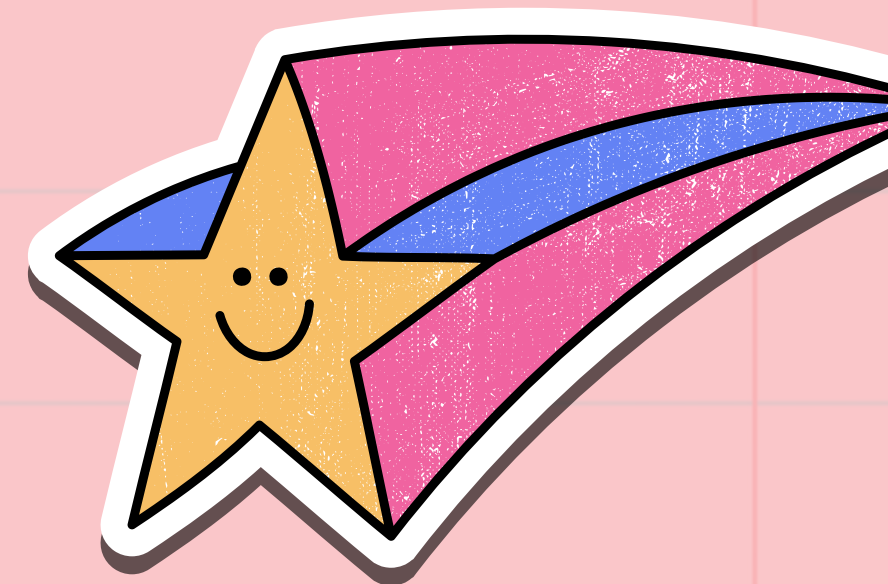
IXL Review from last unit (Smartscore to 80): W3-9, X4, X5

New unit IXL (Smartscore to 80): H1-6

IXL is always due on test day! IXL is assigned as it is introduced in class and should be used as practice of the skill before taking the summative. Do not wait until last minute to complete IXL's from the entire unit.

Weekly Schedule: Week of August 21-25, 2023

Monday	
Class Today	<ul style="list-style-type: none">Unit 1 Summative continued
Math Groups/ Homework	<ul style="list-style-type: none">No Homework - Parent Night @ 5:15 pmWork on IXL's from last unit



Canvas Home Pages

Look here for daily assignments & make up work!



Helpful Information:

Email: jessicaneuman@mckeelschools.com

Current Module

Weekly Schedule: Week of August 28th-September 1st

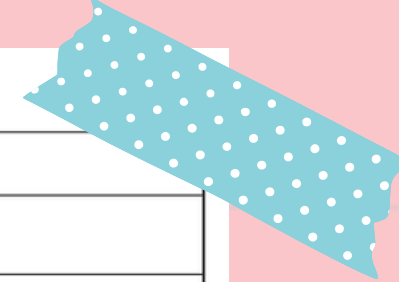
Monday	
Class Today	<ul style="list-style-type: none">Begin class Sunflower ExperimentNotes on writing a hypothesis in your science notebook.
Assignment	<ul style="list-style-type: none">Set up beginning of lab sheet (question, hypothesis)- in class activityHomework this week! "Analyzing Data" worksheet. Record how many hours you spend indoors and outdoors on the worksheet everyday this week. This will be due next Monday! We will do the bar graph together, just record your data!

Tuesday	
Class Today	<ul style="list-style-type: none">Science Pre-Test
Assignment	<ul style="list-style-type: none">Progress Monitoring Form A- Pre-TestHomework this week! "Analyzing Data" worksheet. Record how many hours you spend indoors and outdoors on the worksheet everyday this week. This will be due next Monday! We will do the bar graph together, just record your data!

Wednesday	
-----------	--

Canvas Home Pages

Look here for daily assignments & make up work!



Weekly Schedule: August 28th-September 1st

🌐 Monday

Class Today	<ul style="list-style-type: none">Physical Features of the U.S.
Assignment	<ul style="list-style-type: none">Label US Map with Names of Major Physical Features using Physical Map on pg. 17

🌐 Tuesday

Class Today	<ul style="list-style-type: none">Types of MapsReview Physical Features of the U.S.
Assignment	<ul style="list-style-type: none">Complete Notes using presentation in module to identify types and parts of maps

🌐 Wednesday

Class Today	<ul style="list-style-type: none">Types of MapsReview Physical Features of the U.S.
Assignment	<ul style="list-style-type: none">Complete "Geography Scene Investigation" using maps to identify types of maps shown and use the maps to answer questions

🌐 Thursday

Class Today	<ul style="list-style-type: none">Physical Features of the U.S.
Assignment	<ul style="list-style-type: none">Physical Features of the U.S. Quiz (Formative) STUDY Beforehand!

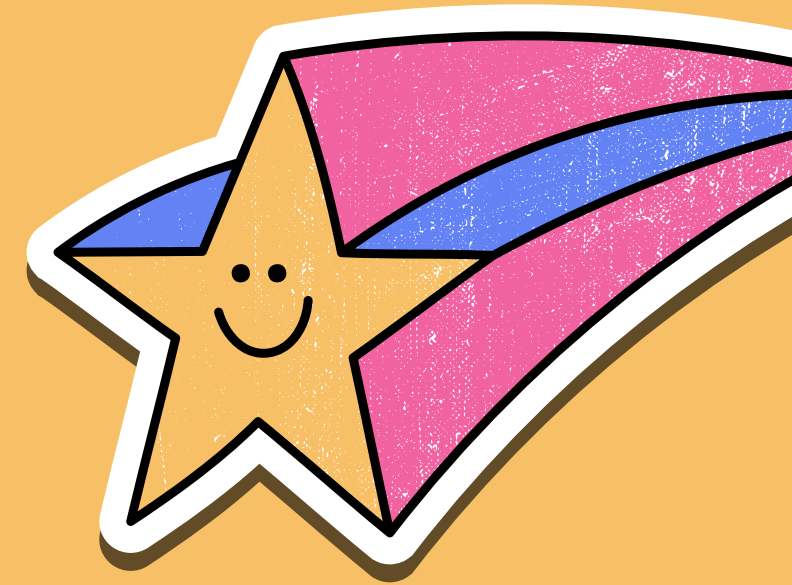
🌐 Friday



Class Today	<ul style="list-style-type: none">Review Parts and Types of MapsPirate Treasure Map Project Expectations
Assignment	<ul style="list-style-type: none">Begin Part 1 of Pirate Treasure Map Project


Click to go to
This Week's Module


Click
to go to Last Week's
Agenda


Checking Grades & Behavior





 **SOC STUDIES 5** > Grades/Behavior


**Account**


**Dashboard**

**Courses**

**Calendar**

**Inbox**

**History**

**Help**

23-24 School Year

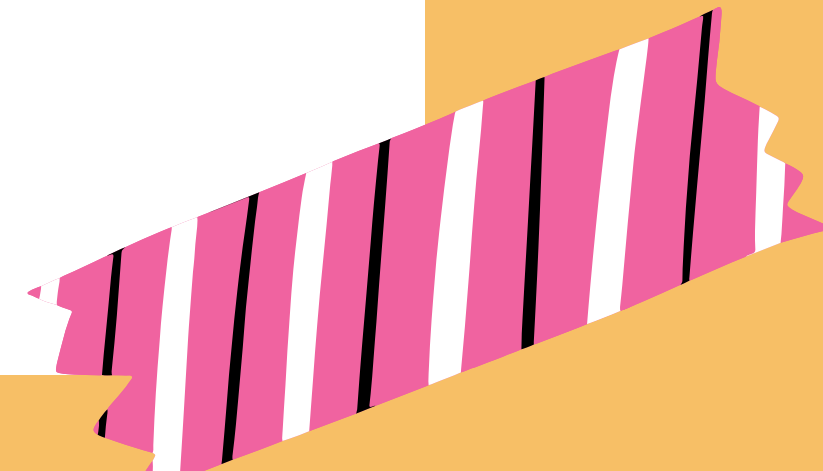
Home

Modules

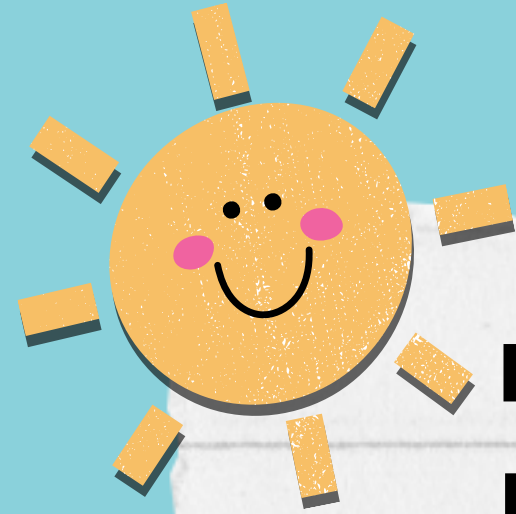
Grades/Behavior

To visit the URL, click the button below.

Open in New Tab



Set up Canvas Notifications



mckeel.instructure.com

Log in

Select ≡

Settings

Email/Push Notifications: "Immediately"

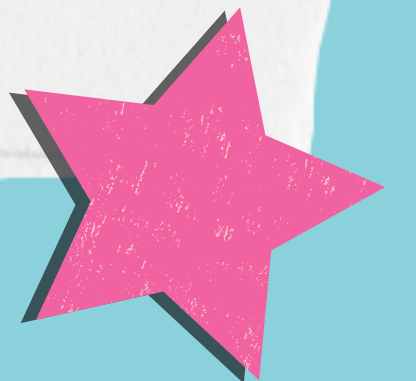
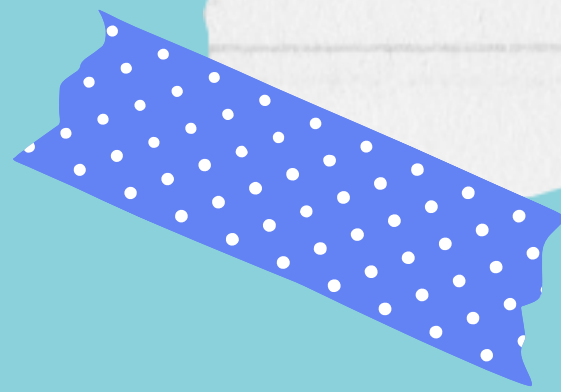
Announcements

Submission Comments

Grades

*All other notifications, choose
"Never"

SUPER



Thank you!

Do you have any questions
for us before we go?

Dream

